

AM. C. OF S.
No. 3573
TRACT A1-2

33
-BLOCK 23-

34

8,138 SF
2224 ENTRADA ROAD

35
-BLOCK 23-

NEW 10' WIDE DRAINAGE EASEMENT

NEW 10' WIDE DRAINAGE EASEMENT

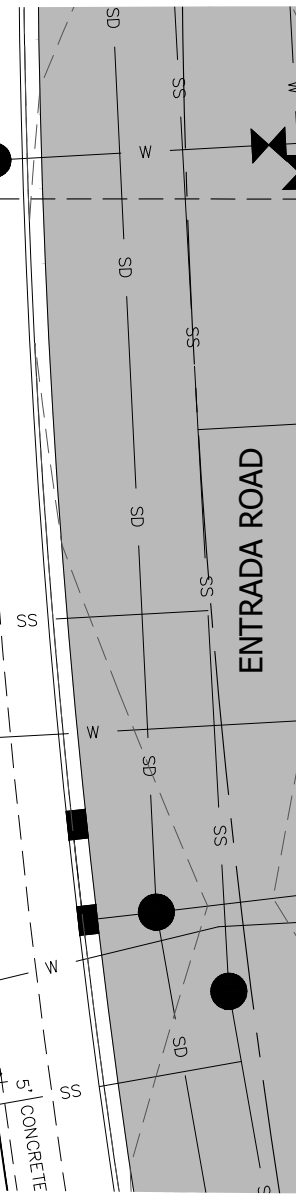
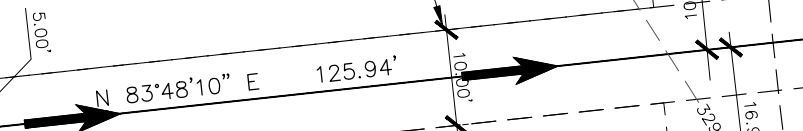
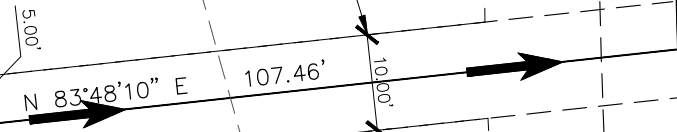
BUILDING SETBACK LINE (TYP.)

NEW 8' WIDE UTILITY EASEMENT

NEW 10' WIDE DRAINAGE EASEMENT

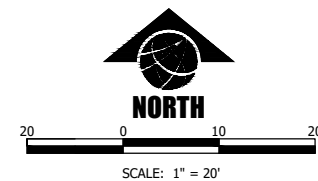
NEW 10' WIDE DRAINAGE EASEMENT

BUILDING SETBACK LINE (TYP.)



- NOTE:
1. ALL DRAINAGE SHALL BE RETAINED ON THE LOT IN ACCORDANCE WITH CITY OF BILLINGS CODE & DIRECTED TOWARD THE PUBLIC RIGHT-OF-WAY UNLESS SPECIFIC DRAINAGE EASEMENTS EXIST.
 2. THIS IS AN EXHIBIT INTENDED TO SHOW LOT SETBACKS AND STREET FEATURES AND IS NOT A PLAT OF LEGAL REPRESENTATION OF LOT BOUNDARIES. REFER TO THE FINAL PLAT FOR LEGAL BOUNDARIES.
 3. PLAT RECORDING #3944845
 4. SIA RECORDING #3944846
 5. DRAINAGE EASEMENT #3944847

= GENERAL DIRECTION OF STORM RUNOFF FROM LOT TO STREET. FINAL GRADING PER BUILDING CODE.



DATE: 11/10/20
FILE: 82061_129_LOT_PROD.DWG
PROJECT NO: 82061.129
CAD: BEG
QUALITY ASSURANCE:
REVISIONS
DATE DESCRIPTION

LOT 34, BLOCK 23, HIGH SIERRA SUB., 14TH FILING
2224 ENTRADA ROAD
BILLINGS, YELLOWSTONE COUNTY, MONTANA
HOUSE LAYOUT AND STAKING PLAN