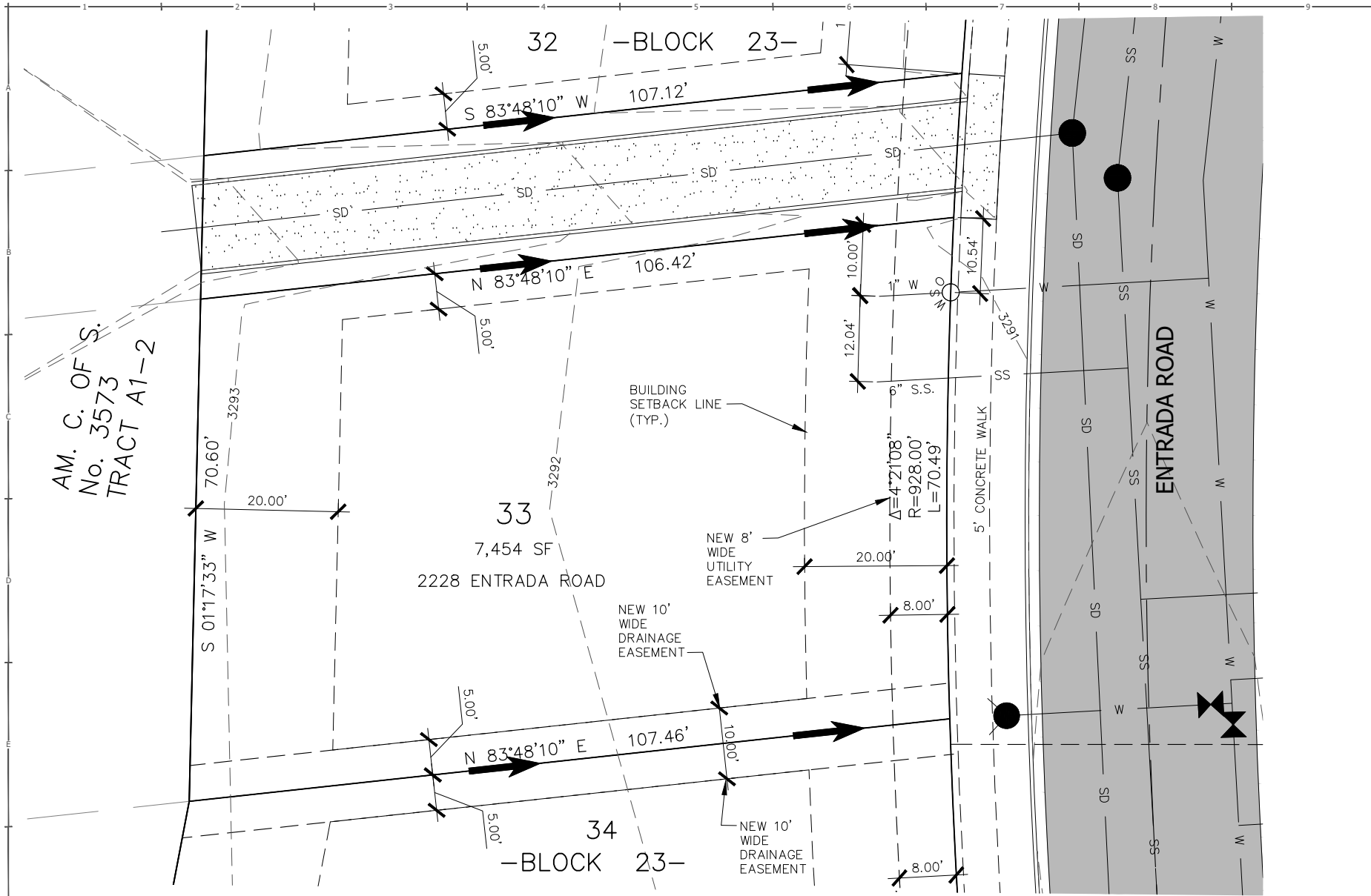


DATE:	11/10/20
FILE:	82061_129_LOT_PROD.DWG
PROJECT NO.:	82061.129
CAD:	BEG
QUALITY ASSURANCE:	
REVISIONS	
DATE	DESCRIPTION

LOT 33, BLOCK 23, HIGH SIERRA SUB., 14TH FILING
2228 ENTRADA ROAD
BILLINGS, YELLOWSTONE COUNTY, MONTANA
HOUSE LAYOUT AND STAKING PLAN

1.0



AM. C. OF S.
No. 3573
TRACT A1-2

- NOTE:**
1. ALL DRAINAGE SHALL BE RETAINED ON THE LOT IN ACCORDANCE WITH CITY OF BILLINGS CODE & DIRECTED TOWARD THE PUBLIC RIGHT-OF-WAY UNLESS SPECIFIC DRAINAGE EASEMENTS EXIST.
 2. THIS IS AN EXHIBIT INTENDED TO SHOW LOT SETBACKS AND STREET FEATURES AND IS NOT A PLAT OF LEGAL REPRESENTATION OF LOT BOUNDARIES. REFER TO THE FINAL PLAT FOR LEGAL BOUNDARIES.
 3. PLAT RECORDING #3944845
 4. SIA RECORDING #3944846
 5. DRAINAGE EASEMENT #3944847

← = GENERAL DIRECTION OF STORM RUNOFF FROM LOT TO STREET. FINAL GRADING PER BUILDING CODE.

