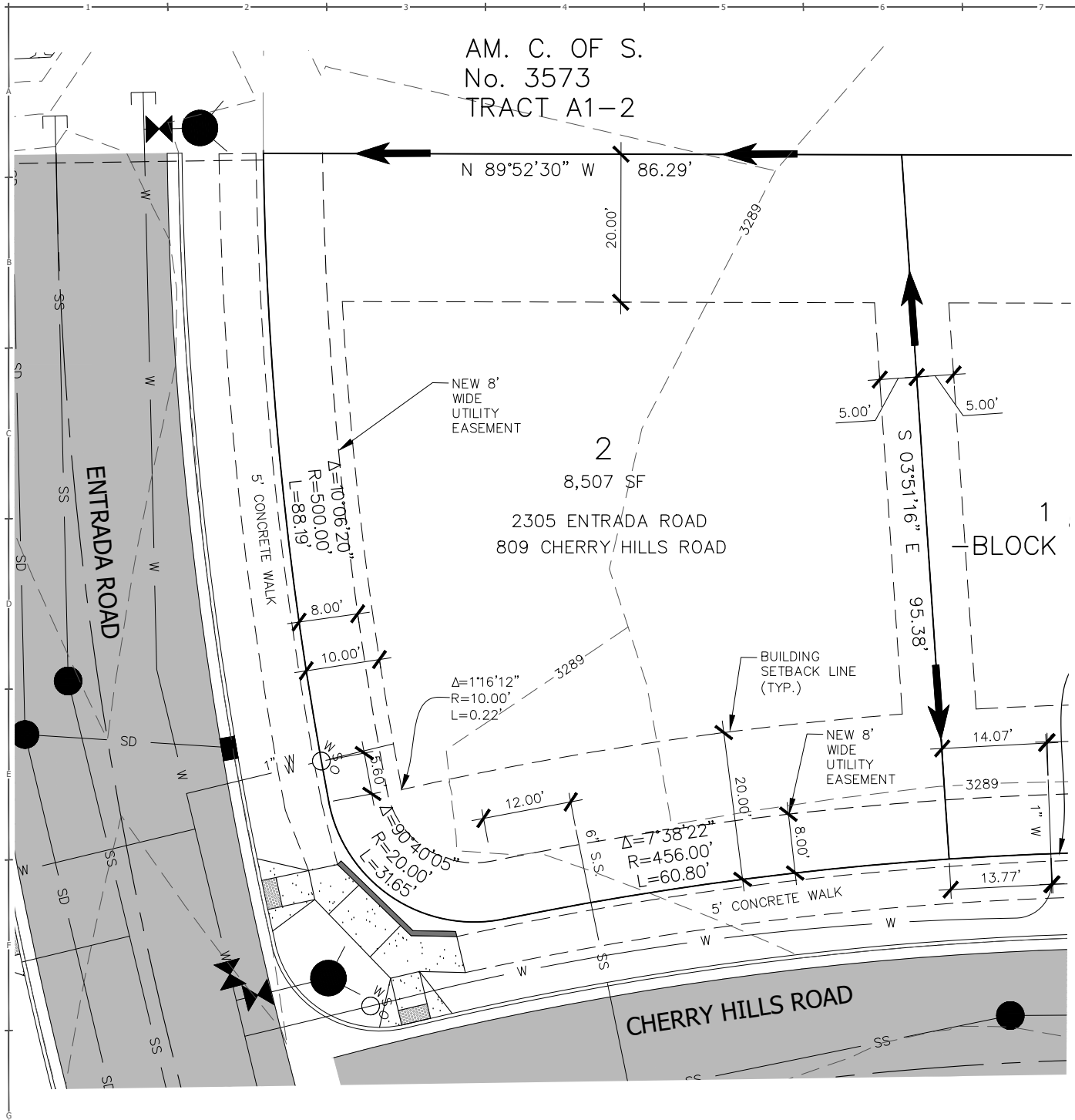


AM. C. OF S.  
No. 3573  
TRACT A1-2

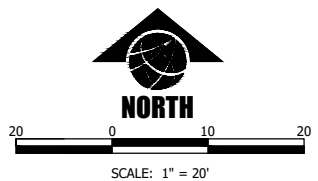
**NOTE:**

1. ALL DRAINAGE SHALL BE RETAINED ON THE LOT IN ACCORDANCE WITH CITY OF BILLINGS CODE & DIRECTED TOWARD THE PUBLIC RIGHT-OF-WAY UNLESS SPECIFIC DRAINAGE EASEMENTS EXIST.
2. THIS IS AN EXHIBIT INTENDED TO SHOW LOT SETBACKS AND STREET FEATURES AND IS NOT A PLAT OF LEGAL REPRESENTATION OF LOT BOUNDARIES. REFER TO THE FINAL PLAT FOR LEGAL BOUNDARIES.
3. PLAT RECORDING #3944845
4. SIA RECORDING #3944846
5. DRAINAGE EASEMENT #3944847

DATE:	11/10/20
FILE:	82061_129_LOT_PROD.DWG
PROJECT NO.:	82061.129
CAD:	BEG
QUALITY ASSURANCE:	
REVISIONS	
DATE	DESCRIPTION



← = GENERAL DIRECTION OF STORM RUNOFF FROM LOT TO STREET. FINAL GRADING PER BUILDING CODE.



LOT 2, BLOCK 21, HIGH SIERRA SUB., 14TH FILING  
809 CHERRY HILLS ROAD & 2305 ENTRADA ROAD  
BILLINGS, YELLOWSTONE COUNTY, MONTANA  
HOUSE LAYOUT AND STAKING PLAN