

← = GENERAL DIRECTION OF STORM RUNOFF FROM LOT TO STREET. FINAL GRADING PER BUILDING CODE.

AM. C. OF S.
No. 3573
TRACT A1-2

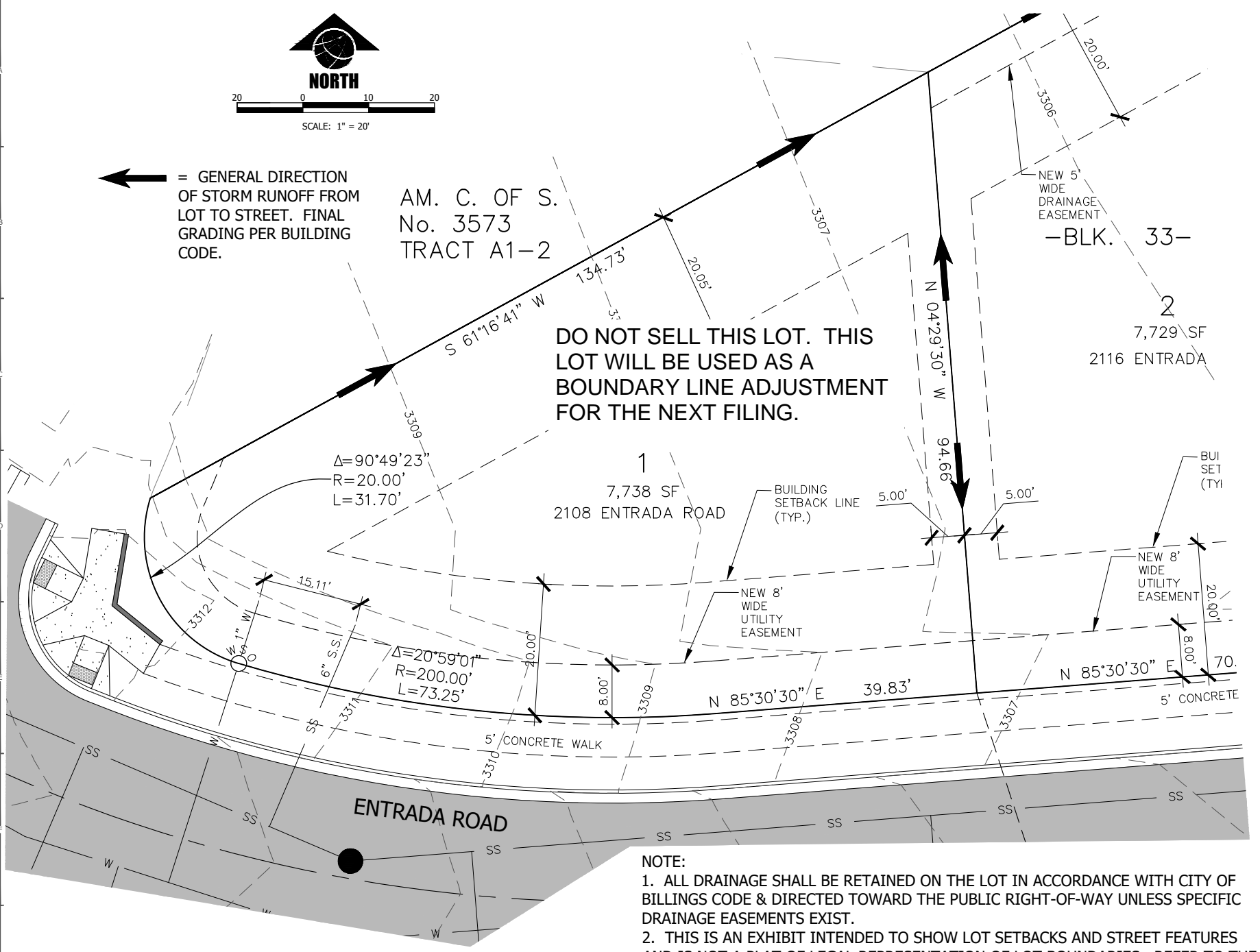
NEW 5' WIDE DRAINAGE EASEMENT
-BLK. 33-
2
7,729 SF
2116 ENTRADA

DO NOT SELL THIS LOT. THIS LOT WILL BE USED AS A BOUNDARY LINE ADJUSTMENT FOR THE NEXT FILING.

1
7,738 SF
2108 ENTRADA ROAD

$\Delta=90^{\circ}49'23''$
 $R=20.00'$
 $L=31.70'$

$\Delta=20^{\circ}59'01''$
 $R=200.00'$
 $L=73.25'$



NOTE:

1. ALL DRAINAGE SHALL BE RETAINED ON THE LOT IN ACCORDANCE WITH CITY OF BILLINGS CODE & DIRECTED TOWARD THE PUBLIC RIGHT-OF-WAY UNLESS SPECIFIC DRAINAGE EASEMENTS EXIST.
2. THIS IS AN EXHIBIT INTENDED TO SHOW LOT SETBACKS AND STREET FEATURES AND IS NOT A PLAT OF LEGAL REPRESENTATION OF LOT BOUNDARIES. REFER TO THE FINAL PLAT FOR LEGAL BOUNDARIES.
3. PLAT RECORDING #3944845
4. SIA RECORDING #3944846
5. DRAINAGE EASEMENT #3944847

DATE:	11/10/20
FILE:	82061_129_LOT_PROD.DWG
PROJECT NO.:	82061.129
CAD:	BEG
QUALITY ASSURANCE:	
REVISIONS	
DATE	DESCRIPTION

LOT 1, BLOCK 33, HIGH SIERRA SUB., 14TH FILING
2108 ENTRADA ROAD
BILLINGS, YELLOWSTONE COUNTY, MONTANA
HOUSE LAYOUT AND STAKING PLAN