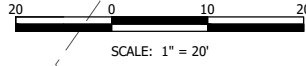
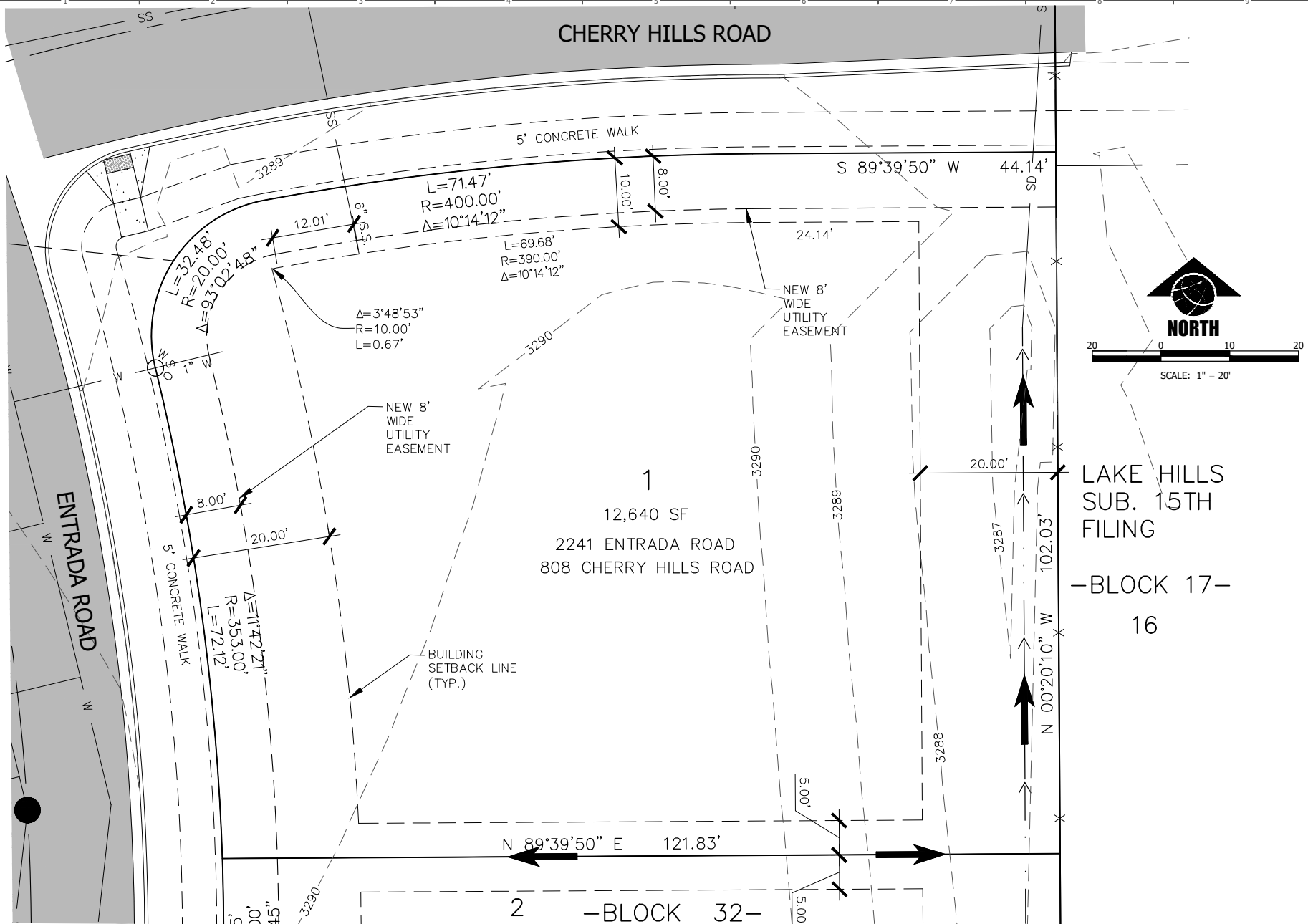


DATE: 11/19/20
 FILE: 82061_129_LOT_PROD.DWG
 PROJECT NO: 82061.129
 CAD: BEG
 QUALITY ASSURANCE:
 REVISIONS
 DATE DESCRIPTION

LOT 1, BLOCK 32, HIGH SIERRA SUB., 14TH FILING
 2241 ENTRADA ROAD & 808 CHERRY HILLS ROAD
 BILLINGS, YELLOWSTONE COUNTY, MONTANA
 HOUSE LAYOUT AND STAKING PLAN

CHERRY HILLS ROAD



LAKE HILLS
 SUB. 15TH
 FILING
 -BLOCK 17-
 16

2 -BLOCK 32-

NOTE:

1. ALL DRAINAGE SHALL BE RETAINED ON THE LOT IN ACCORDANCE WITH CITY OF BILLINGS CODE & DIRECTED TOWARD THE PUBLIC RIGHT-OF-WAY UNLESS SPECIFIC DRAINAGE EASEMENTS EXIST.
2. THIS IS AN EXHIBIT INTENDED TO SHOW LOT SETBACKS AND STREET FEATURES AND IS NOT A PLAT OF LEGAL REPRESENTATION OF LOT BOUNDARIES. REFER TO THE FINAL PLAT FOR LEGAL BOUNDARIES.
3. PLAT RECORDING #3944845
4. SIA RECORDING #3944846
5. DRAINAGE EASEMENT #3944847

= GENERAL DIRECTION OF STORM RUNOFF FROM LOT TO STREET. FINAL GRADING PER BUILDING CODE.